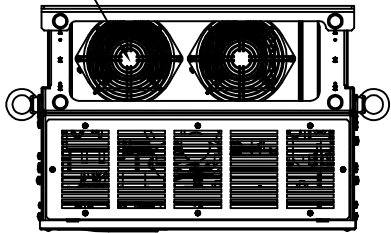
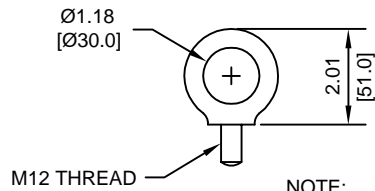


(2) EXTERNAL COOLING FANS

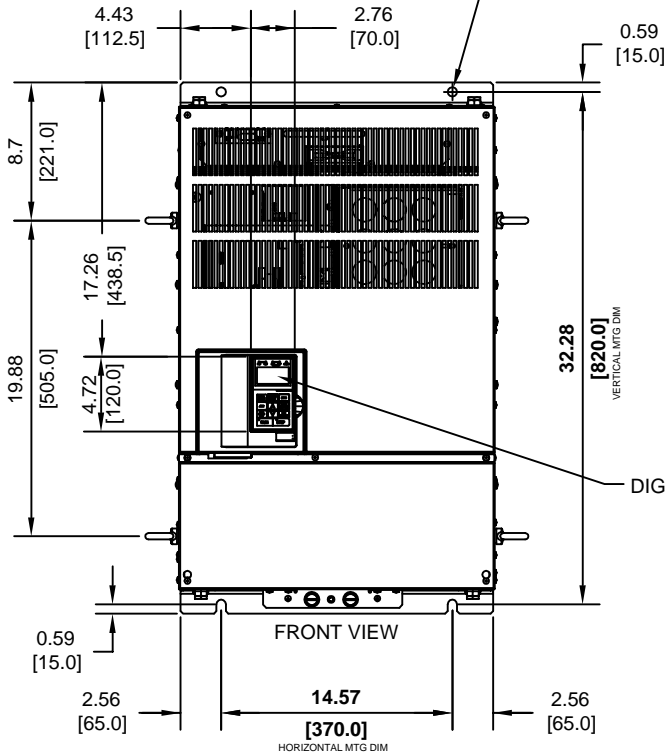


LIFTING AND EYEBOLT DETAILS



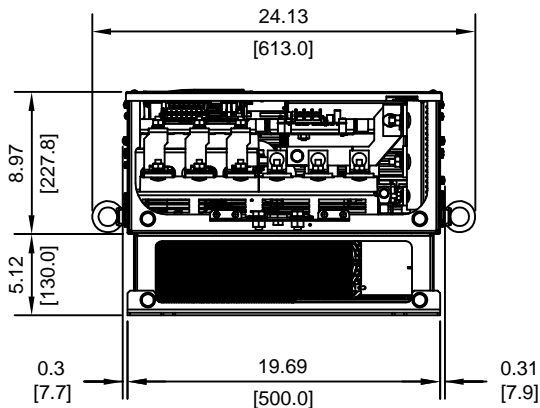
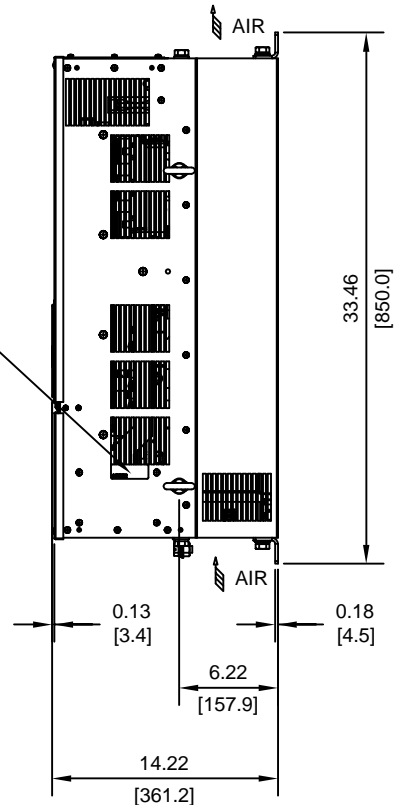
NOTE:
SPREADER BAR REQUIRED TO AVOID DAMAGE DURING LIFTING

(4)-MOUNTING HOLES FOR 1/2" [M12] SCREWS



NAMEPLATE

DIGITAL OPERATOR



MODEL # CIMR-G7U	VOLTAGE (VAC)	OUTPUT CURRENT (A)	WEIGHT LBS (Kg)	HEAT LOSS (W)		
				INT	EXT	TOTAL
2075	208/230	300	238 (108)	823	2009	2832
4090	480	195	240 (109)	762	1928	2690
4110		240	279 (127)	928	2299	3227

INT=INTERNAL COMPONENTS
EXT=EXTERNAL HEATSINK

FOR ADDITIONAL DETAILS AND SPECIFICATIONS, CONSULT MANUAL

TOLERANCES/REFERENCES: -	
UNITS: IN[mm]	SCALE: 1:12

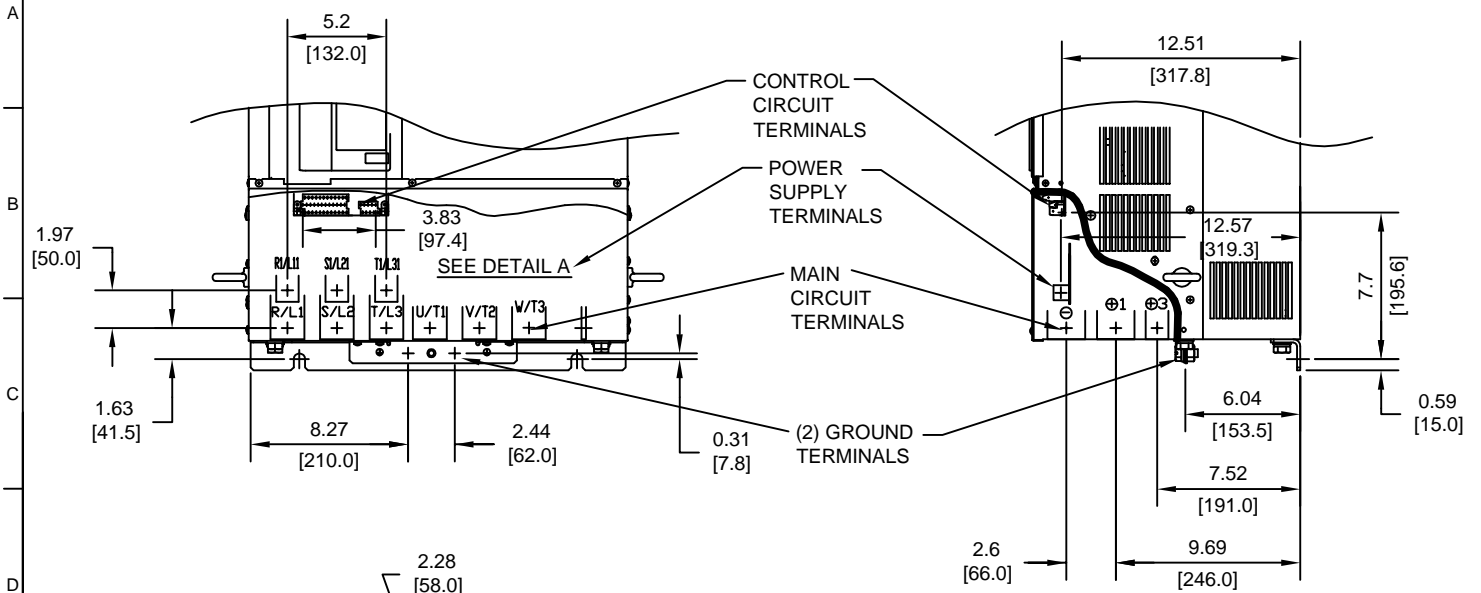
YASKAWA
A World of Automation Solutions™

YASKAWA ELECTRIC AMERICA, INC.
Corporate Headquarters
2121 Norman Drive South
Waukegan, IL 60085
1-800-YASKAWA
http://www.yaskawa.com

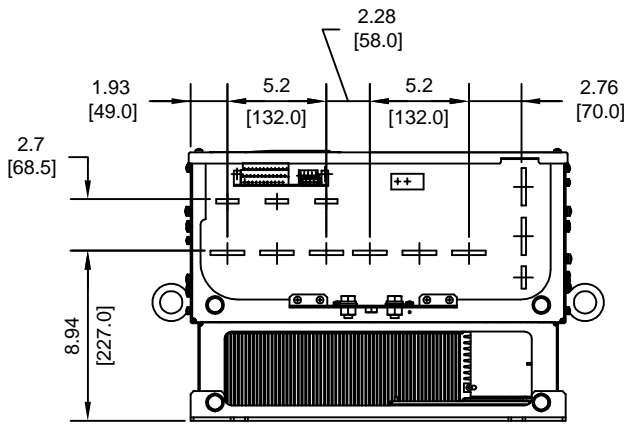
DRAWN: J. MATTAS	DATE 3-1-04
CHECKED: E. KU	DATE 4-4-04
TECH: J. CAIRO	DATE 4-2-04
APPROVED: T. SASADA	DATE 5-7-04
ORIGINAL DESIGN: -	DATE -

TITLE: G7 DIMENSION DRAWING FRAME SIZE 11 IP00 ENCLOSURE G7U2075, 4090 TO 4110		
SIZE A	REVISION -	PAGE 1 of 3
DRAWING #: DD.G7.FR11.IP00.01		

TERMINAL AND WIRING DETAILS (SCALE 1:10)

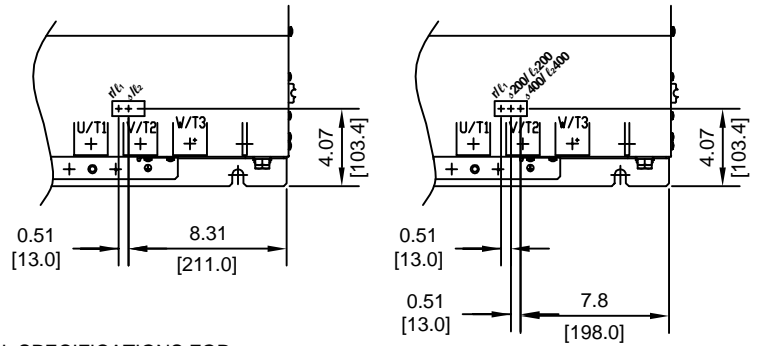


DETAIL A (SCALE 1:10)



MODEL G7U2075

MODELS G7U4090 AND G7U4110



TERMINAL SPECIFICATIONS FOR MAIN CIRCUIT AND GROUND

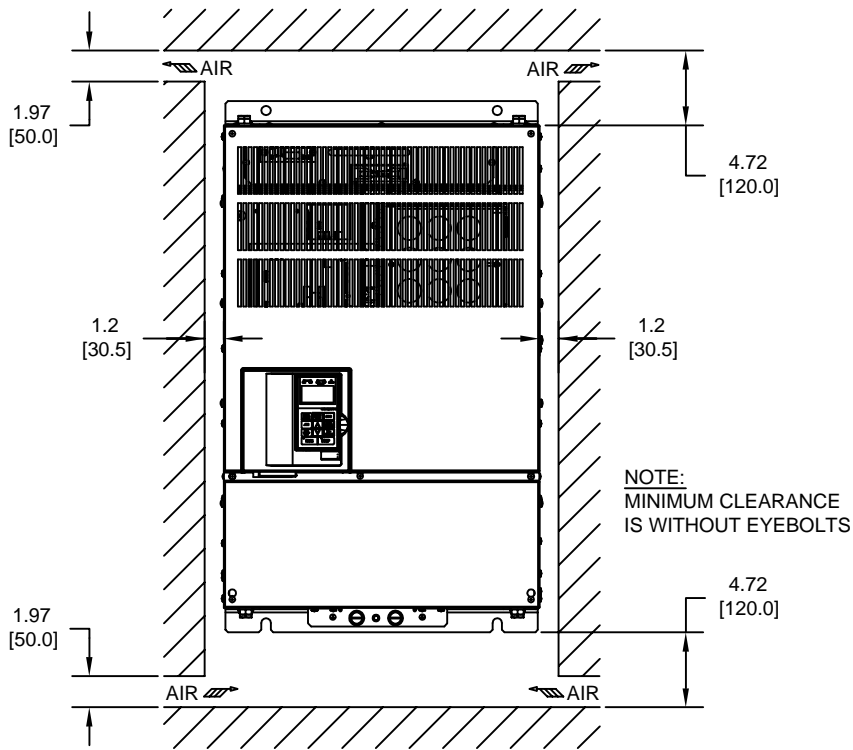
MODEL # CIMR-G7U	TERMINAL SYMBOL	TERMINAL SCREW	CLAMPING TORQUE lb.in.(N.m.)
2075	R/L1, S/L2, T/L3, ⊕1, ⊕3, U/T1, V/T2, W/T3, R1/L11, S1/L21, T1/L31	M12	276 TO 345 (31.4 TO 39.2)
	⊕3	M8	78.0 TO 95.0 (8.8 TO 10.8)
	rℓ1, sℓ2	M4	11.4 TO 12.3 (1.3 TO 1.4)
4090	R/L1, S/L2, T/L3, ⊕1, ⊕3, U/T1, V/T2, W/T3, R1/L11, S1/L21, T1/L31	M10	155 TO 198 (17.6 TO 22.5)
	⊕3	M8	78.0 TO 95.0 (8.8 TO 10.8)
	⊕	M12	276 TO 345 (31.4 TO 39.2)
	rℓ1, s200/ℓ2200, s400/ℓ2400	M4	11.4 TO 12.3 (1.3 TO 1.4)
4110	R/L1, S/L2, T/L3, ⊕1, ⊕3, U/T1, V/T2, W/T3, R1/L11, S1/L21, T1/L31	M10	155 TO 198 (17.6 TO 22.5)
	⊕3	M8	78.0 TO 95.0 (8.8 TO 10.8)
	⊕	M12	276 TO 345 (31.4 TO 39.2)
	rℓ1, s200/ℓ2200, s400/ℓ2400	M4	11.4 TO 12.3 (1.3 TO 1.4)

NOTE: REFER TO APPLICABLE CODES FOR PROPER WIRE TYPE AND SIZE

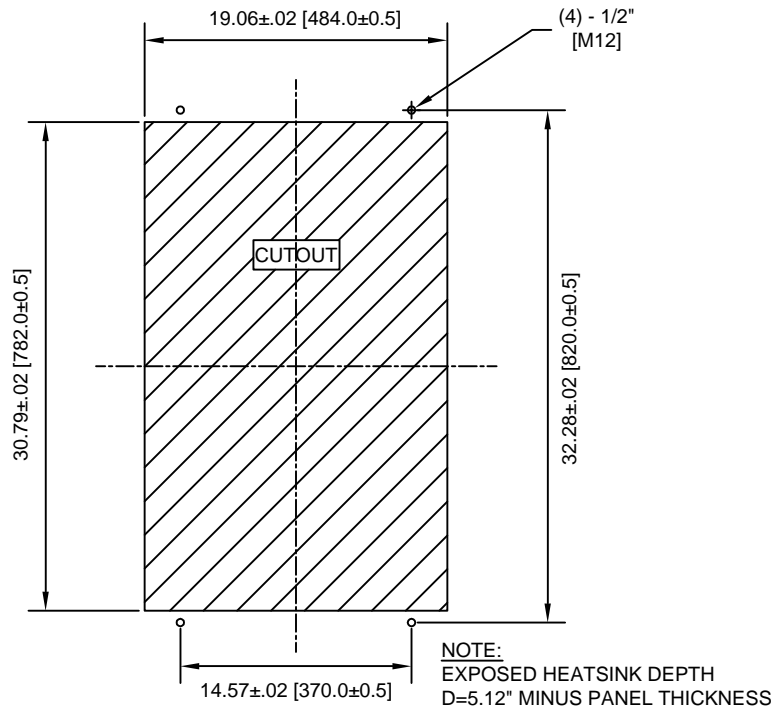
FOR ADDITIONAL DETAILS AND SPECIFICATIONS, CONSULT MANUAL

TOLERANCES/REFERENCES: - - - -	<p>YASKAWA A World of Automation Solutions™</p> <p>YASKAWA ELECTRIC AMERICA, INC. Corporate Headquarters 2121 Norman Drive South Waukegan, IL 60085 1-800-YASKAWA http://www.yaskawa.com</p>	DRAWN: J. MATTAS	DATE 3-1-04	TITLE: G7 DIMENSION DRAWING						
		CHECKED: E. KU	DATE 4-4-04	FRAME SIZE 11						
		TECH: J. CAIRO	DATE 4-2-04	IP00 ENCLOSURE						
		APPROVED: T. SASADA	DATE 5-7-04	G7U2075, 4090 TO 4110						
UNITS: IN[mm]	SCALE: BY VIEW	ORIGINAL DESIGN: -	DATE -	<table border="1"> <tr> <td>SIZE</td> <td>REVISION</td> <td>PAGE</td> </tr> <tr> <td>A</td> <td>-</td> <td>2 of 3</td> </tr> </table>	SIZE	REVISION	PAGE	A	-	2 of 3
SIZE	REVISION	PAGE								
A	-	2 of 3								
		DRAWING # DD.G7.FR11.IP00.01								


MINIMUM INSTALLATION CLEARANCES (SCALE 1:12)



PANEL CUTOUT FOR EXTERNAL HEATSINK MOUNTING CONFIGURATION (SCALE 1:12)



FOR ADDITIONAL DETAILS AND SPECIFICATIONS, CONSULT MANUAL

TOLERANCES/REFERENCES: - - - - - - - - - -		 YASKAWA <i>A World of Automation Solutions™</i> YASKAWA ELECTRIC AMERICA, INC. Corporate Headquarters 2121 Norman Drive South Waukegan, IL 60085 1-800-YASKAWA http://www.yaskawa.com	DRAWN: J. MATTAS	DATE: 3-1-04	TITLE: G7 DIMENSION DRAWING		
UNITS: IN[mm]	SCALE: BY VIEW		CHECKED: E. KU	DATE: 4-4-04	FRAME SIZE 11		
		TECH: J. CAIRO	DATE: 4-2-04	IP00 ENCLOSURE			
		APPROVED: T. SASADA	DATE: 5-7-04	SIZE: A	REVISION: -	PAGE: 3 of 3	
		ORIGINAL DESIGN: -	DATE: -	DRAWING #: DD.G7.FR11.IP00.01			